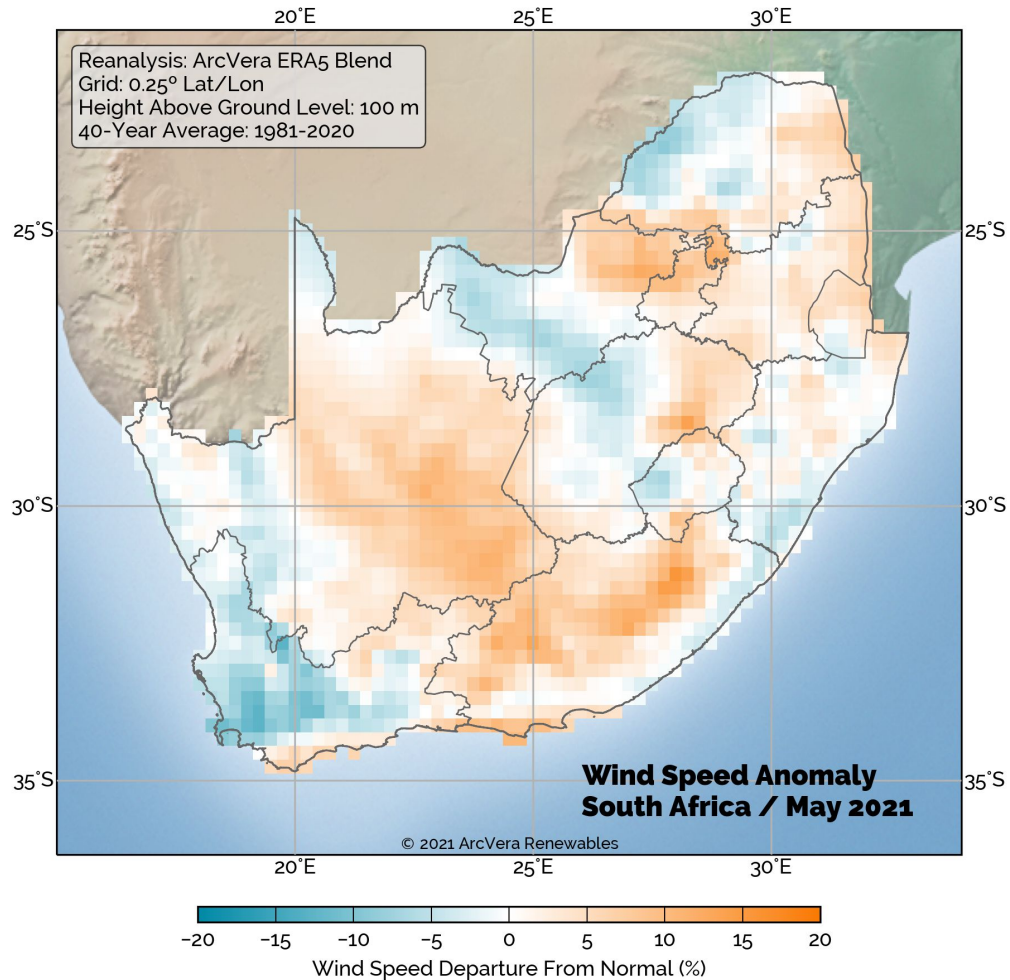


# South Africa Wind Anomaly Map



# About our **Wind** and **Solar** Anomaly Maps

**ArcVera's Wind and Solar Anomaly Maps** quickly and accurately provide a visual representation of the percent deviation of the wind and solar resource in a region. These timely maps contain critical information for project stakeholders who are responsible for providing monthly project production reports and answering to others (e.g., investors and owners) for production missing or exceeding forecasts. The first step one takes is typically to review the resource "fuel" before deepening production investigations.



# Do you require a deeper investigation of your production anomalies?

## **ArcVera offers numerous valuable resource and production options:**

- Quarterly, Year-to-date, Annual or custom periods
- Project specific anomalies?
- Production anomalies in addition to resource anomalies
  - Estimated production anomalies based on energy sensitivity to resource;
  - Production forensics for detailed attribution of production anomaly causes.

**FOR A FREE CONSULTATION, CONTACT:**

**[daniel.struwig@arcvera.com](mailto:daniel.struwig@arcvera.com)**

# Related services include:

## Operation and Maintenance Strategies

ArcVera Renewables draws upon its considerable expertise to inform its clients' operation and management strategies and repowering plans when their solar or wind assets reach the end of their life cycles. Our highly experienced teams of engineers and analysts offer a comprehensive range of operations and repowering services.

## Power Plant Optimization Services

Understanding significant under- or over-prediction can provide critical information toward continuous resource assessment improvement. We optimize wind and solar assets by using reliable and technologically advanced atmospheric science and renewable energy engineering data analysis methods buttressed by over 40 years of experience.

**FOR A FREE CONSULTATION, CONTACT:**

**[daniel.struwig@arcvera.com](mailto:daniel.struwig@arcvera.com)**

# ArcVera Renewables provides first-class consulting and technical services for wind and solar energy clients worldwide.

## LOCATIONS

### NORTH AMERICA | UNITED STATES

GHQ | COLORADO (Golden)

VERMONT (Burlington)

WASHINGTON (Bellingham)

### LATIN AMERICA | BRAZIL

SÃO PAULO (São Paulo)

### AFRICA & EUROPE

SOUTH AFRICA (Cape Town)

### ASIA PACIFIC & MIDDLE EAST

INDIA (Bangalore)

### CONTACT - SOUTH AFRICA

Daniel Struwig

Renewable Energy Engineer

[daniel.struwig@arcvera.com](mailto:daniel.struwig@arcvera.com)

m +27-61-496-4292

[info@arcvera.com](mailto:info@arcvera.com)

[www.arcvera.com](http://www.arcvera.com)



**ARCVERA**  
RENEWABLES